

CORRECTION FOR PATTERN

MODEL 03 SHAWL **



SIZE

35 x 150 cm, 13¾ x 59 in

MATERIALS

Rico Fashion Cotton Merino Lace;
1 x 50g ball in shade 013 (Peaches)
Rico Creative Make It Perlchen;
1 x 50g balls in shade 004 (Jade)
Rico Design knitting needles 4.5mm (UK 7)

TENSION

20 sts and 28 rows to a 10 cm (4 in) square in lace pattern with 4.5mm needles and 2 strands of yarn held together

PATTERN STITCHES

Stocking Stitch (st-st)

Row 1 (RS): Knit.

Row 2: Purl.

Rep these 2 rows.

YARN

Divide the ball of Rico Fashion Cotton Merino Lace in half by weighing 25g. Shawl will be increased to full width until half the ball has been used.

NOTE

To make a thicker yarn, use two strands of yarn held together. Make sure you work under both strands for each stitch.

INSTRUCTIONS

Using 4.5mm needles and 2 strands of yarn held together, cast on 7 sts.

Row 1 (RS): K1, sl1wyif, k3, sl1wyif, k1.

Row 2: Sl1wyif, k1, sl1wyif, p1, sl1wyif, k1, sl1wyif.

Row 3: K1, sl1wyif, k1, kfb, k1, sl1wyif, k1. 8 sts.

Row 4: Sl1wyif, k1, sl1wyif, p2, sl1wyif, k1, sl1wyif.

Row 5: K1, sl1wyif, k2, kfb, k1, sl1wyif, k1. 9 sts.

Row 6: Sl1wyif, k1, sl1wyif, p3, sl1wyif, k1, sl1wyif.

Row 7: K1, sl1wyif, k to last 4 sts, kfb, k1, sl1wyif, k1. 10 sts.

Row 8: Sl1wyif, k1, sl1wyif, p to last 3 sts, sl1wyif, k1, sl1wyif.

Rep rows 7 and 8 three times more. 13 sts.

These 14 rows form the I-cords at each side with st-st in the centre.

Note: Throughout the following instructions, keep the 3 sts of each I-cord correct.

Commence patt

Row 1: K1, sl1wyif, k1, *k2tog, yfwd; rep from * to last 4 sts, kfb, k1, sl1wyif, k1. 14 sts.

Row 2 and every foll WS row: Sl1wyif, k1, sl1wyif, p to last 3 sts, sl1wyif, k1, sl1wyif.

Row 3: K1, sl1wyif, k to last 4 sts, kfb, k1, sl1wyif, k1. 15 sts.

Row 5: K1, sl1wyif, k1, *yfwd, sl1-k1-pssso; rep from * to last 4 sts, kfb, k1, sl1wyif, k1. 16 sts.

Row 7: As row 3. 17 sts.

Row 9: As row 1. 18 sts.

Row 11: As row 3. 19 sts.

Row 13: K1, sl1wyif, k5, k2tog, yfwd, k1, yfwd, sl1-k1-pssso, k3, kfb, k1, sl1wyif, k1. 20 sts.

Row 15: K1, sl1wyif, k4, k2tog, yfwd, k3, yfwd, sl1-k1-pssso, k3, kfb, k1, sl1wyif, k1. 21 sts.

Row 17: K1, sl1wyif, k6, yfwd, sl1-k2tog-pssso, yfwd, k6, kfb, k1, sl1wyif, k1. 22 sts.

Row 19: As row 3. 23 sts.

Row 20 (WS): Sl1wyif, k1, sl1wyif, p to last 3 sts, sl1wyif, k1, sl1wyif.

Rep row 1 to row 12 again. 29 sts.

Main increase section

Row 1: K1, sl1wyif, *k5, k2tog, yfwd, k1, yfwd, sl1-k1-pssso; rep from * to last 7 sts, k3, kfb, k1, sl1wyif, k1. 30 sts.

Row 2 and every foll WS row: Sl1wyif, k1, sl1wyif, p to last 3 sts, sl1wyif, k1, sl1wyif.

Row 3: K1, sl1wyif, k1, *k3, k2tog, yfwd, k3, yfwd, sl1-k1-pssso; rep from * to last 7 sts, k5, sl1wyif, k1.

Row 5: K1, sl1wyif, k1, *k5, yfwd, sl1-k2tog-pssso, yfwd, k2; rep from * to last 7 sts, k3, kfb, k1, sl1wyif, k1. 31 sts.

Row 7: K1, sl1wyif, k to last 2 sts, sl1wyif, k1.

Row 9: K1, sl1wyif, k1, *k2tog, yfwd; rep from * to last 4 sts, kfb, k1, sl1wyif, k1. 32 sts.

Row 11: As row 7.

Row 13: K1, sl1wyif, k1, *yfwd, sl1-k1-pssso; rep from * to last 5 sts, k1, kfb, k1, sl1wyif, k1. 33 sts.

Row 15: As row 7.

Row 17: As row 9. 34 sts.

Row 19: As row 7.

Row 20: Sl1wyif, k1, sl1wyif, p to last 3 sts, sl1wyif, k1, sl1wyif.

These 20 rows form the patt with I-cords at each side and set the increases on every 4th row.

Note: in further repeats of the 20 row patt, work increased sts in patt or in st-st until there are enough sts to work the pattern correctly.

Cont in patt until shawl measures approx. 75cm, 29½in, long or until 25g (half the ball) of the yarn has been used, ending with either row 3 or row 13 of patt (RS row).

Work 1 row in patt.

Decrease section

Next row (RS): Patt to last 5 sts, k2tog, k1, sl1wyif, k1.

This row sets the decrease.

Cont in patt, dec 1 st as set on every foll 4th row to 29 sts, ending with a RS dec row.

Cont in patt, dec 1 st as set on every foll RS row to 7 sts, working in st-st when there aren't enough sts to work the patt, ending with a RS dec row.

Next row (WS): Sl1wyif, k1, sl1wyif, p1, sl1wyif, k1, sl1wyif.

Cast off.

FINISHING

Weave in yarn ends. Shape and pin out whilst damp by spraying or placing a clean damp cloth over the knitted pieces. Leave to dry.

CHART A

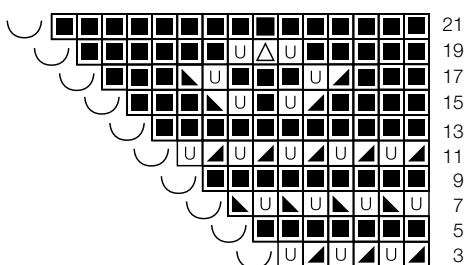


CHART B

